

INDOFINE CHEMICAL COMPANY, INC.  
121 Stryker Lane, Bldg. 30  
Hillsborough, NJ 08844  
chemical@indofinechemical.com

Phone: (908) 359-6778

Fax: (908) 359-1179

## CERTIFICATE OF ANALYSIS

Cat No.: C-003

Product: **CONESSINE**  
(Nerine, Roquessine, Wrightine)

Cas Number: [546-06-5]

Lot Number: 1003020

Chemical Formula:  $C_{24}H_{40}N_2$

Molecular Weight: 356.59

Melting Point: 125-126.6°C

Source: From *Holarrhena antidysentrica* seeds

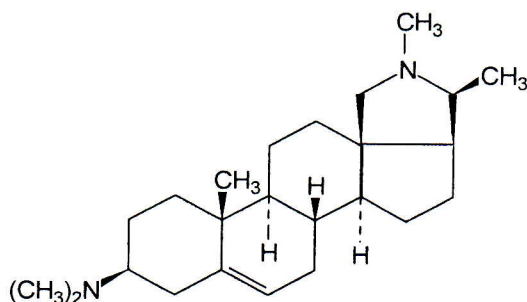
Appearance: Off white powder

TLC: Dichloromethane : methanol (10:1)

Solubility: Gives a clear solution in Methanol, DMSO

Storage: Cool dry place

Purity: 97%





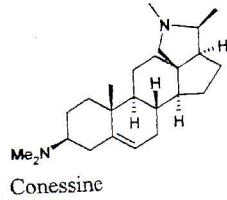
# INDOFINE Chemical Company, Inc.

121 Stryker Lane, Bldg. 30, Suite 1 • Hillsborough, NJ 08844 • U.S.A.

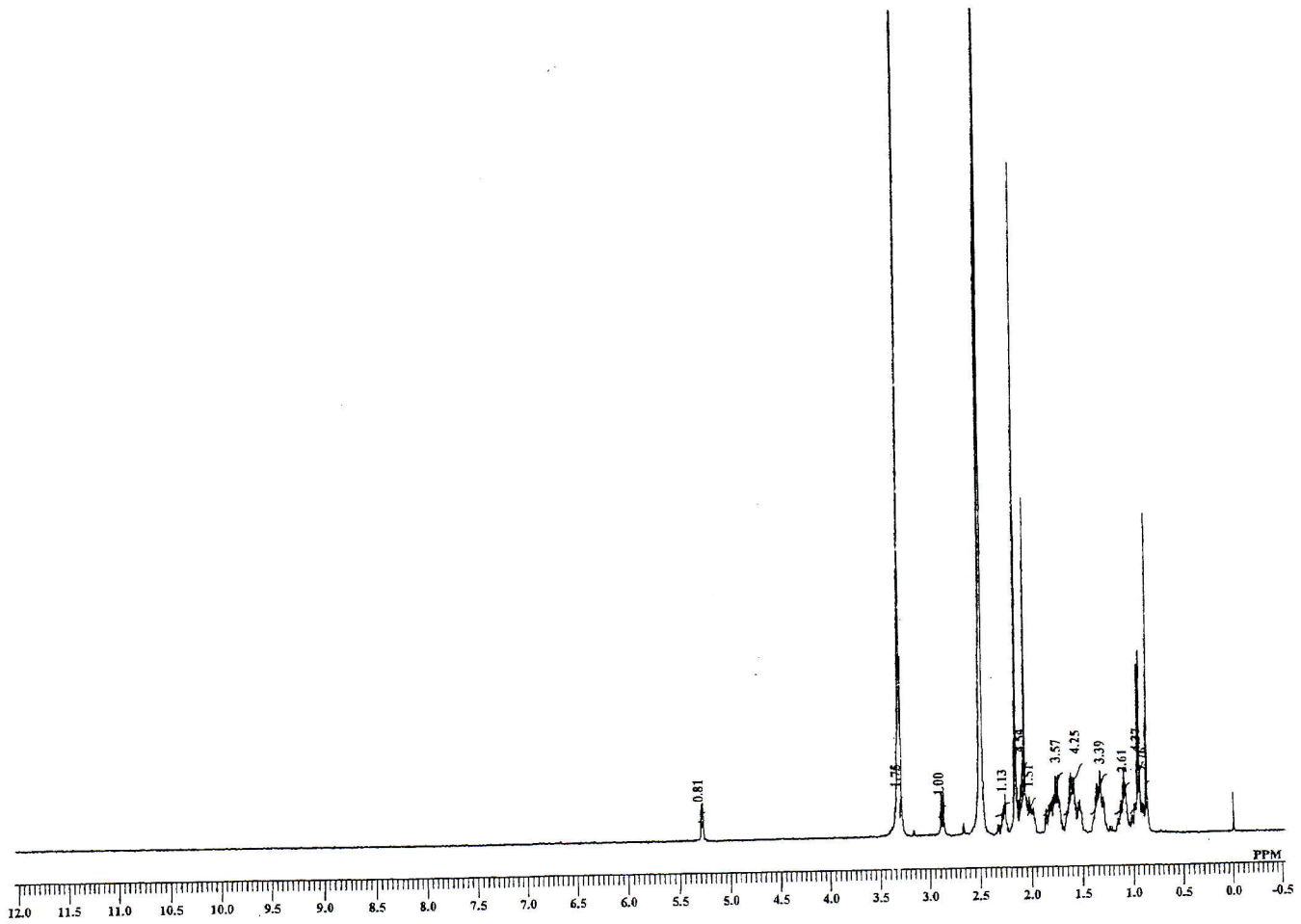
Phone: (908) 359-6778 • FAX: (908) 359-1179

website: [www.indofinechemical.com](http://www.indofinechemical.com)

e-mail: [chemical@indofinechemical.com](mailto:chemical@indofinechemical.com)



Cat. No.: C-003  
Product: Conessine  
Lot No.: 1003020





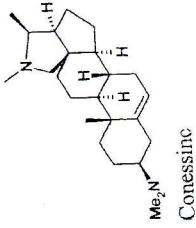
# INDOFINE Chemical Company, Inc.

121 Stryker Lane, Bldg. 30, Suite 1 • Hillsborough, NJ 08844 • U.S.A.

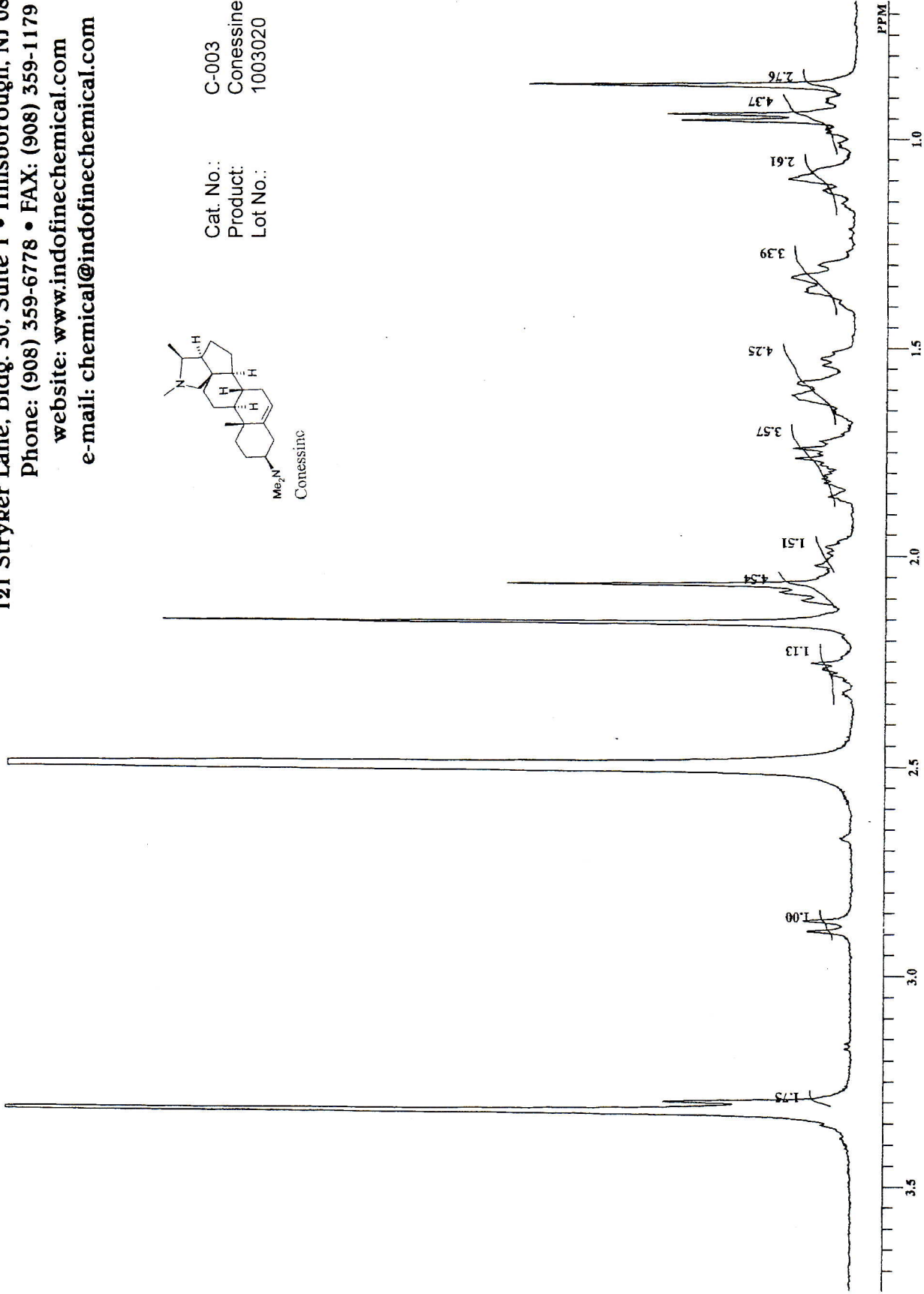
Phone: (908) 359-6778 • FAX: (908) 359-1179

website: [www.indofinechemical.com](http://www.indofinechemical.com)

e-mail: [chemical@indofinechemical.com](mailto:chemical@indofinechemical.com)



Cat. No.: C-003  
Product: Conessine  
Lot No.: 1003020





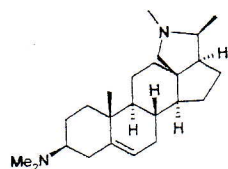
# INDOFINE Chemical Company, Inc.

121 Stryker Lane, Bldg. 30, Suite 1 • Hillsborough, NJ 08844 • U.S.A.

Phone: (908) 359-6778 • FAX: (908) 359-1179

website: [www.indofinechemical.com](http://www.indofinechemical.com)

e-mail: [chemical@indofinechemical.com](mailto:chemical@indofinechemical.com)



Conessine

Cat. No.: C-003  
Product: Conessine  
Lot No.: 1003020

Sample Information  
Sample Name : CNS  
Sample ID : -  
Data File : CNS.Lcd  
Method File : Test1(ESI).lcm  
Acquired by : BSS  
Date Acquired : 2/27/2010 10:05:28 AM

MS Spectrum Graph

